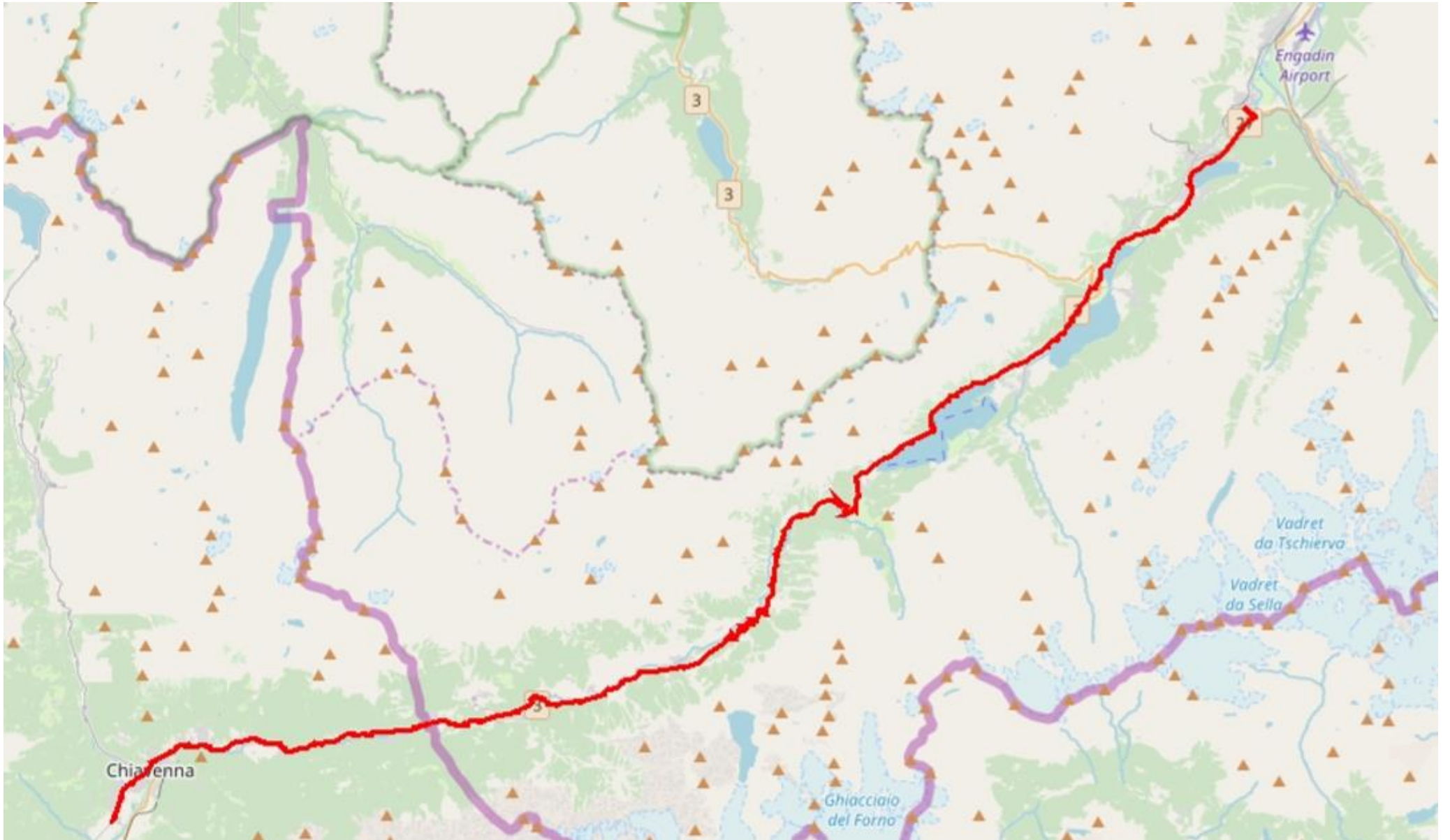
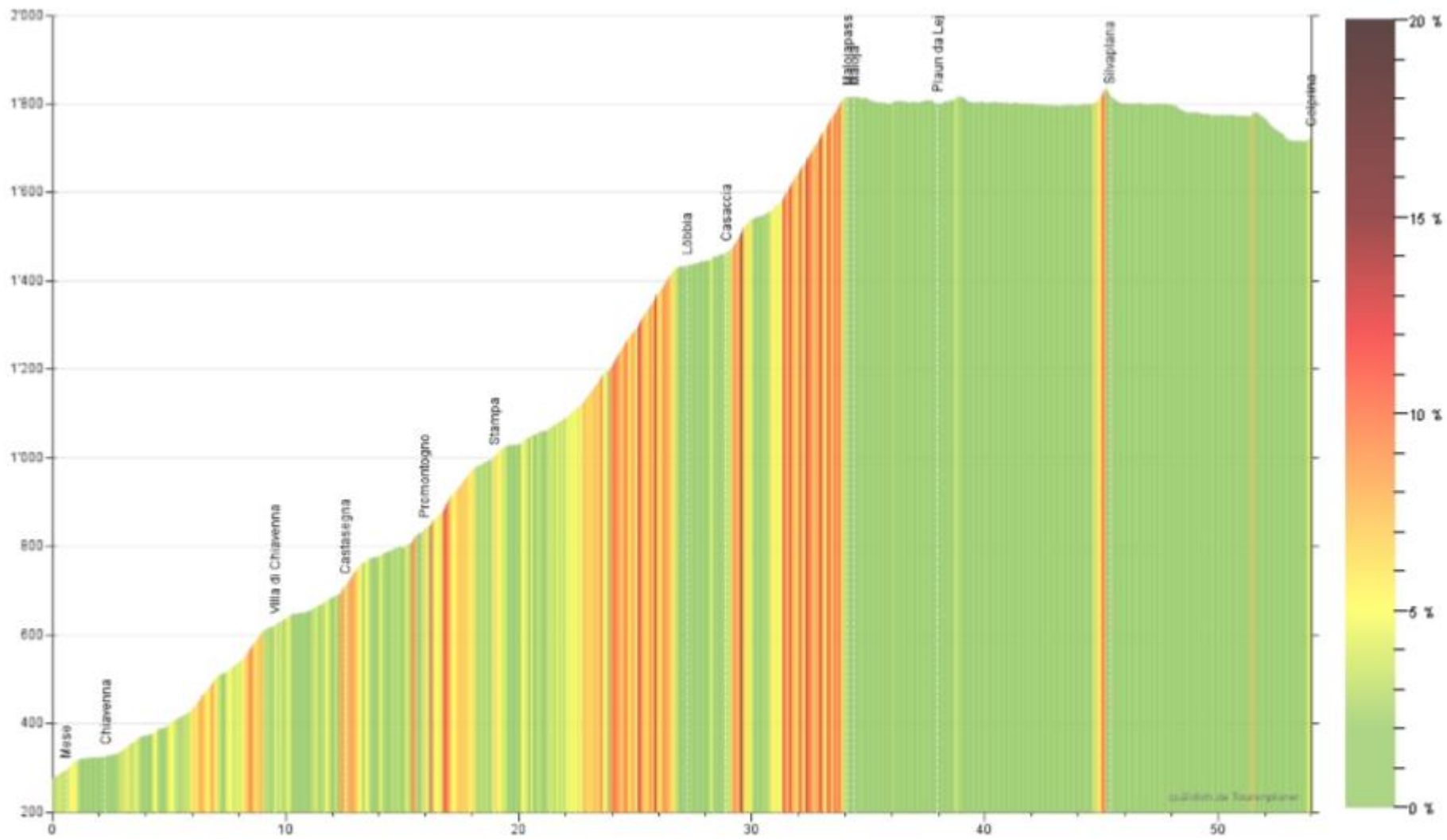


Etappe 8: Mese - Celerina

Ort	Kilometer	Höhe über Mehr	Höhenmeter kumuliert	Steigung	Zeit
Mese	0,0	276	0		00:00:00
Villa di Chiavenna	9,6	623	347	4.1 %	00:40:42
Castasegna	12,6	711	436	2.9 %	00:51:58
Promontogno	16,0	839	570	3.8 %	01:06:59
Stampa	19,0	1'002	733	5.4 %	01:24:15
Löbbia	27,3	1'434	1'166	5.2 %	02:10:32
Casaccia	28,9	1'464	1'196	1.8 %	02:15:34
Malojapass	34,1	1'815	1'549	6.8 %	02:51:37
Maloja	34,4	1'815	1'549		02:52:19
Plaun da Lej	38,0	1'800	1'565	-0.4 %	03:00:46
Silvaplana	45,4	1'818	1'628	0.2 %	03:20:59
Celerina	54,0	1'724	1'654	-1.1 %	03:40:47





08 Mese - Celerina; 54 km; 1'654 Höhenmeter

Created by quäldich.de Tourenplaner | Offline Download unter: <http://tourcenplaner.quaeldich.de> | Online: <http://www.renrad-tourenplaner.de>

